

Lab901 ScreenTape® System Quick Protocol

1. Prepare PCR Product and consumables (Screentape and tube, etc)



2. Prepare ladder and samples (0.2ml tube or 96 well PCR plate)

Ladder: Add 8ul of Screentape DS12 ladder into the first tube
 Sample: Add 6ul of Screentape DS12 loading buffer and 2ul of PCR product

*The ladder and samples must be at the bottom of the tube and contain no bubbles.

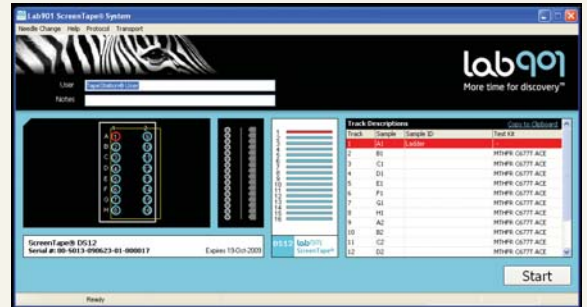
3. Place your sample tubes, tips and screentape consumable into the taping station

(Face the barcode away from the sample block and toward the front of the instrument)
 (Lane 1 for ready -to- load buffer)



4. Choose the items to test on the program

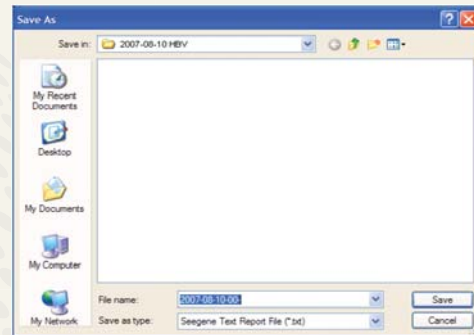
5. Select required samples



6. Press 'Start'



7. Specify a file name with which to save your results. File numbers will be automatically counted.



8. Open the lid of the instrument, and remove all used tips from the tip buckets and screentape after terminating process and then press 'OK'!



Headquarters

Seegene, Inc.
 Taewon Bldg., 65-5, Bangyi-Dong,
 Songpa-Gu, Seoul 138-050, Korea
 Tel: +82-2-2240-4008, Fax: +82-2-2240-4040
www.seegene.co.kr

Seegene USA

9700 Great Seneca Highway, Rockville,
 MD 20850, U.S.A.
 Tel: +1-301-762-9066, +1-866-733-4949 (Toll free)
 Fax: +1-301-762-9088, +1-866-733-4955 (Toll free)
www.seegene.com